

# Cyclone

Fungicide

## RESEARCH BULLETIN

### Powdery mildew trial on greenhouse pepper



#### TECHNICAL SPECIFICATIONS

- **Canadian registration number: 30459**
- **Active ingredients:** Citric acid and lactic acid (present as fermentation products of *Lactobacillus casei* strain LPT-111)
- **Formulation Type:** Liquid concentrate
- **Chemical Group:** N/A Biopesticide
- **PHI:** 0 days
- **REI:** When spray is dry
- **Approved for organic agriculture**

#### USE PATTERN EVALUATED

CROP	DISEASE	RATE	FOLIAR SPRAY VOLUME	APPLICATION TIMING
Greenhouse Pepper	Powdery mildew	12 L/ha	1000 L/ha	Curative 10 days interval between treatments

#### MODE OF ACTION

Cyclone forms a protective barrier on leaf surface that inhibits pathogen development. It also has antifungal effects on conidia germination, germ tube formation and elongation, appressorium formation, hyphae branching and haustorium formation.

## TRIAL METHOD

- Trial performed on behalf of AEF Global in Morocco.
- In October 2014, corn beef sweet pepper seedlings (var. 'COUACH) were transplanted into direct soil under greenhouse growing conditions.
- Treatments were applied in a randomized block design with 4 replications. Blocks consisted of 5 lines with 800 plants each.
- Fungicide treatments were applied during April 2015 after the observation of a uniform infection of Powdery Mildew.
- 10 days after the first treatment, 10 leaves of approximately the same age were observed from each plant of 20 plants/plot. The percentage of the area of the lower surface of the leaf covered by powdery mildew was determined visually (severity), and the number of leaves infected (incidence) was recorded.
- A second application was conducted 10 days after the first one.

# Cyclone

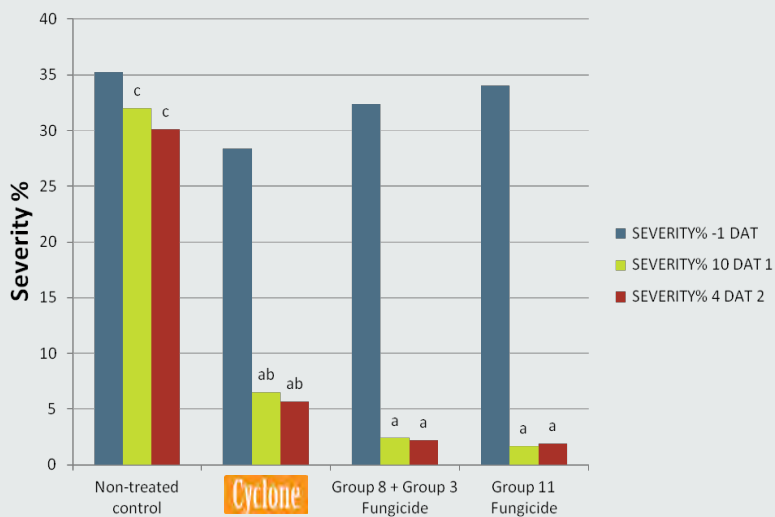
## RESEARCH BULLETIN



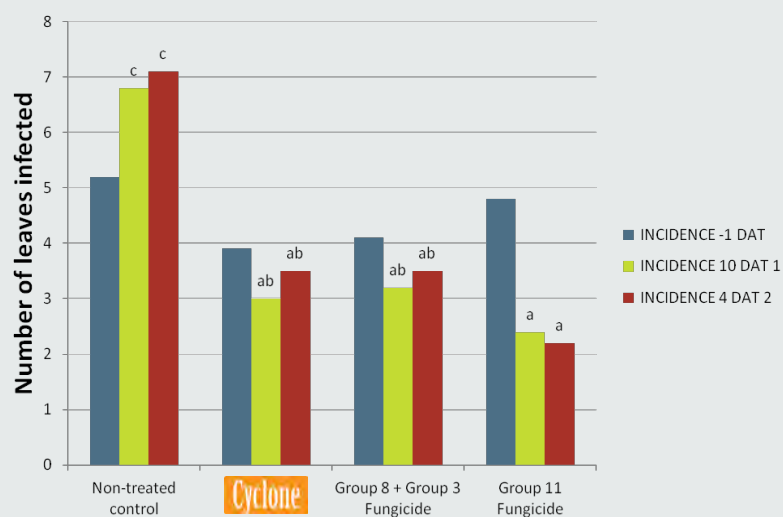
*Powdery mildew on pepper*

## RESULTS

**Percent leaf area covered by powdery mildew lesions (severity) before the application, after the first treatment (10 DAT 1) and 4 days after the second treatment (4 DAT 2)**



**Number of leaves infected in different plots (incidence) before the application, after the first treatment (10 DAT 1) and 4 days after the second treatment (4 DAT 2)**



**Treatment:** Control - Group 11 Fungicide 250 g/l, SC at 50 cc/hl - Group 8 Fungicide 116 g/l + Group 3 Fungicide 47 g/l, EC at 150 cc/hl - Cyclone 12 L/ha

Cyclone is registered in Canada by AEF Global. Please refer to product label for complete application details. Always read and follow label directions. Log on to [www.aefglobal.com](http://www.aefglobal.com) for full label information.

Cyclone is not registered for greenhouse pepper.