



Fight against Powdery Mildew in orchards



TECHNICAL SPECIFICATIONS

- **Active ingredients:** Garlic
- **Packaging:** One (1) case = 2 x 10L
- **Formulation Type:** Liquid concentrate
- **Chemical Group:** N/A Biopesticide
- **PHI:** 0 days
- **REI:** When spray is dry
- **Approved for organic agriculture**

USE PATTERN EVALUATED

CROP	DISEASE	RATE	FOLIAR SPRAY	APPLICATION TIMING
Apple trees	Powdery mildew	9 - 18 L/ha	500 L/ha	Treat after rain or after a prolonged period of moisture, when conditions are conducive for disease

MODE OF ACTION

After treatment with Buran the conidia and mycelia of pathogenic fungus growing on leaf surface are plasmolyzed and dry out.

MÉTHODOLOGIE

- Test conducted in a commercial orchard in 2015 in Grimsby, Ontario by IPM Crop Scouting-Horticultural & Berry Crops
- The experimental design was a complete random design with four replications.
- Trees variety: Cortland.
- Comparative treatments were applied with a CO₂ sprayer and a spray volume of 500 L/ha.
- The comparative treatments dates were: 1 May (early green tip), May 6 (1/2" green), May 10 (tight cluster), May 13 (full bloom), May 20 (petal fall), May 27 (fruit set), June 7 (fruits 1/4"), June 21 (fruits 1.5")
- The incidence of powdery mildew on the leaves was evaluated on a sample of 25 leaves per replicate.
- The incidence of white and scab on fruit was evaluated on a sample of 10 fruits per replicate.

COMPATIBILITY

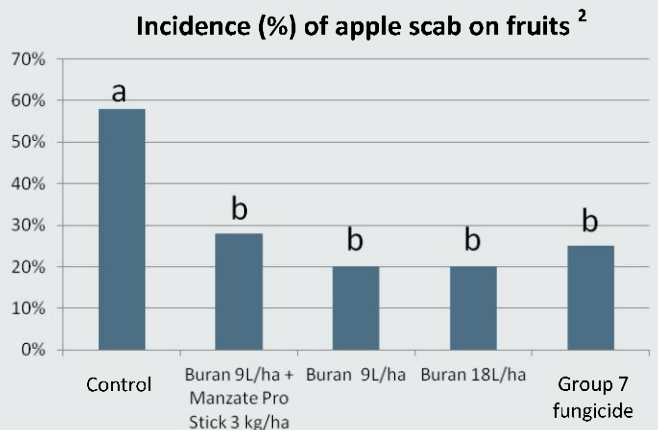
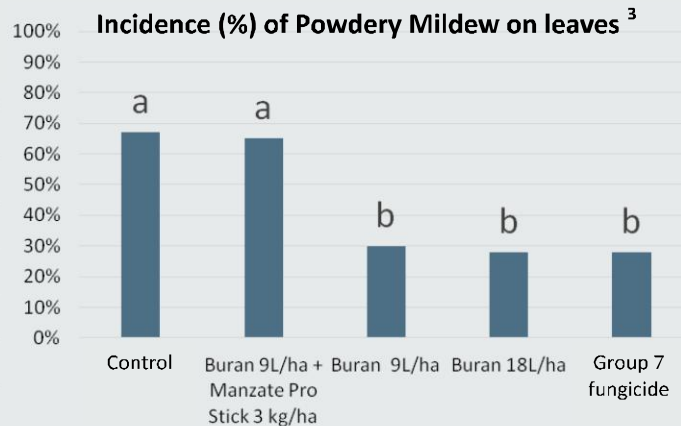
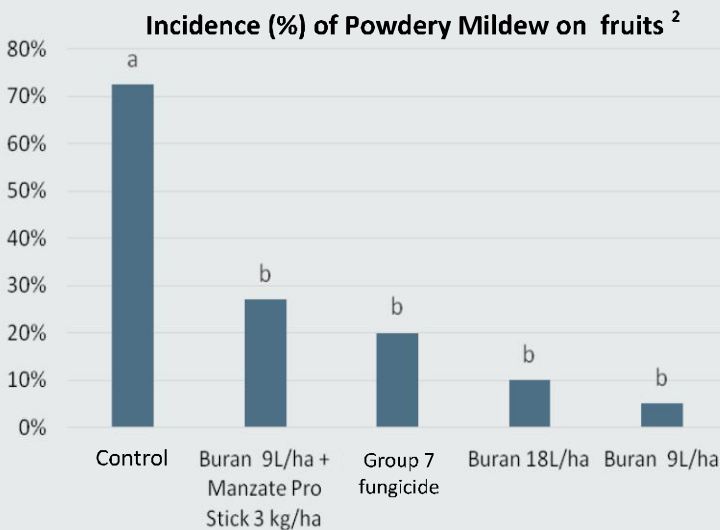
Buran is compatible with:

- Kocide^{md} 2000 (Copper Hydroxyde)¹
- Fontelis^{MC} (Penthiopyrade)¹
- Calypso^{MC} (Thiaclopride)¹
- Sovran^{MD} (Krésoxim-methyl)¹

¹ Phytotoxicity was measured on Lobo, Cortland and McIntosh apple varieties.



RÉSULTS



² Within-column means sharing a same letter are not significantly different according to Tukey test with $\alpha=0.05$

³ Within-column means sharing a same letter are not significantly different according to protected LSD test with $\alpha=0.05$

Contact your local ag-retailer for more information

Buran is registered in Canada by AEF Global. Kocide is a registered Trademark of La Compagnie E.I. du Pont Canada. Fontelis is a Trademark of La Compagnie E.I. du Pont Canada. Calypso is a Trademark of Bayer CropSciences Inc. Sovran is a registered Trademark of BASF Canada Inc.

Please refer to product label for complete application details. Always read and follow label directions. Log on to www.aefglobal.com for full label information.

Buran is not registered for Powdery Mildew in apple trees

925A des Calfats • Lévis (QC) G6Y 9E8

Toll free: 1 (866) 622-3222 • Tel.: (418) 838-4441 • Fax: (418) 838-9909 • Email: info@aefglobal.com

www.aefglobal.com

